

STANDARD EQUIPMENT

ISO standard canopy -Canopy FOPS(ISO 10262 Level I) TOPS(ISO 12117) -Safety glass windows -Sliding fold-in front window -Sliding side window -Lockable door -Accessory box -Centralized monitoring -Gauges	Fuel level gauge Engine coolant temperature gauge Warning Engine oil pressure Engine coolant temperature Preheat Low battery Air cleaner closing Fuel empty	Door and locks, one key Radio / USB player Mechanical suspension seat with seat belt Console box tilting system(LH.) Two front working lights Electric horn Battery (1 x 12 V x 80 AH) Battery master switch Automatic swing brake	Removable reservoir tank Water separator, fuel line Mono boom (2.03 m, 6' 5") Arm (1.12 m, 3'8") Rubber crawler (300 mm, 10") Single acting piping (Breaker, etc) Double acting piping (Clamshell, etc)
---	---	--	---

OPTIONAL EQUIPMENT

ISO standard cabin -Cabin FOPS(ISO 10262 Level I) TOPS(ISO 12117) -All-weather steel cab with all-around visibility -Beacon lamp	Accumulator, work equipment lowering Travel alarm Quick coupler Tool kit Long Arm (1.35m, 4'5")	Heater & Defroster Lever pattern change valve Additional CWT Proportional control suitor Proportional control switch	RCV with Proportional Control Switch Rotating Piping Boom & Arm Safety Lock Valve Hyundai Bio Hydraulic Oil (HBHO)
--	---	--	---

- * Standard and optional equipment may vary. Contact your Hyundai dealer for more information. The machine may vary according to International standards.
- * The photos may include attachments and optional equipment that are not available in your area.
- * Materials and specifications are subject to change without advance notice.
- * All imperial measurements rounded off to the nearest pound or inch.

PLEASE CONTACT

 **HYUNDAI CONSTRUCTION EQUIPMENT**

Robex

30z-9AK

With Tier 4 Final Engine installed

MOVING YOU FURTHER

HYUNDAI CONSTRUCTION EQUIPMENT



*Photo may include optional equipment.

 **HYUNDAI**
CONSTRUCTION EQUIPMENT

PRIDE AT WORK

Hyundai construction equipment strives to build state-of-the-art earthmoving equipment to give every operator maximum performance, more precision, versatile machine preferences, and proven quality.

Moving you further !

Robex 30Z-9AK

Machine Walk-Around

Engine Technology

Proven, reliable, fuel efficient, low emission and low noise Kubota Tier 4 final.

Rugged Upper and Lower Frame

The upper frame is designed to be heavy duty to absorb high stress load on the job. X-leg center frame and reinforced box section track frame provide exceptional strength and longer service life to withstand tough working conditions.

Efficient Control System

Control devices are all conveniently located for improved operator comfort and productivity. A safety lever on the left-side console is designed to prevent exiting the cabin while hydraulic controls are live.

Advanced Hydraulic System

The R30Z-9AK hydraulic system is precision designed for fast operation with fine control capabilities.

Comfortable and Durable Cabin

The cabin is roomy and ergonomically designed, with reduced sound levels and good visibility. Both canopy and cabin style frames meet international standards TOPS, FOPS ensuring operator's safety.

Operator Convenience

The R30Z-9AK features a suspension seat, pedals for added space and multiple storage compartments. The monitoring system includes seven warning indicators, water temperature gauge, fuel gauge and hour meter for productive, convenient operating.

Easy and Simple Maintenance

An adjustable suspension seat, wrist rests, ergonomically designed joysticks and plenty of leg room help to reduce operator fatigue. A array of indicators and gauges are displayed on the monitor which keep the operator aware of machine performance at all times. The monitoring system includes seven warning indicators, water temperature gauge, fuel gauge and hour meter.

Extended Life of Components

The R30Z-9AK reduces operating costs over time with long life hydraulic filters, hydraulic oil, shims and bushings.



*Photo may include optional equipment.

PRECISION

Innovative hydraulic system technologies make the 9A series excavator fast, smooth and easy to control.



*Photo may include optional equipment.



Boom Swing

The R30Z-9AK's boom swing function is designed for efficient work in congested residential and urban areas. The boom can be offset left or right within an operating range.



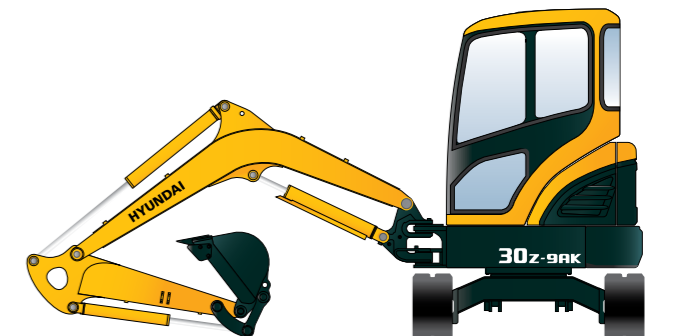
Auto Shift Traveling System

During high-speed traveling, travel motor speed decreases automatically when subjected to heavy load, and resumes when the load reduces.



Dozer Blade

Large dozer blade provides added versatility, work efficiency and stability for the job.



Zero-tail Swing

R30Z-9AK's short tail swing radius allows the operator work in confined areas like close to buildings on roadways, and in urban areas. This compact radius design provides easy and efficient operation in any limited space work environment.



Lever Pattern Change Valve

Joystick control patterns can be changed through an optional pattern change valve positioned for easy access.

PERFORMANCE

9A series is designed for maximum performance to keep the operator working productively.



Cylinder Covers

Standard boom and dozer cylinder covers provide added protection.



Structure Strength

The R30Z-9AK cabin structure has been fitted with stronger but slimmer tubing for added safety and improved visibility. Low-stress, high strength steel is integrally welded to form a stronger, more durable upper and lower frame. Structural integrity was tested by way of FEM (Finite Elements Method) analysis and long-term durability tests.

Kubota D1305

Emissions: The most compact multi-cylinder liquid cooled industrial diesel engines comply with EPA Tier 4 Emission regulations without additional After Treatment Tools. This engine meets standards over the NRTC and NTE requirements.

Lower Noise Level: The half-float valve cover and MoS₂ coated piston reduce noise levels and vibration.



*Photo may include optional equipment.

PREFERENCE

Operating a 9A series is unique to every operator. Operators can fully customize their work environment and operating preferences to fit their individual needs.



*Photo may include optional equipment.



Monitor

The monitoring system of the R30Z-9AK provides the operator with machine status information, including: engine oil pressure lamp, battery charge lamp, engine coolant temperature and a fuel gauge.

Comfortable Operating Cabin

In a 9A series cabin, you can easily adjust the seat and wrist rests settings to best suit your preferred operating condition.

1. All pedals are for additional floor space. Foot rest, attachment pedal, left and right travel pedals and boom swing pedal are arranged for convenient access.
2. Two cup holders are integrated into the right console for large and small drink storage.
3. An additional storage box with key lock is accessible under the operator's seat.
4. Adjustable wrist rests provide additional comfort.
5. A sliding fold-in front window is easily opened and safely stored in an open position to improve ventilation and visibility.(Cabin type only)



Reduced Stress

An operator's work environment should be stress free. Hyundai's R30Z-9AK compact excavator is designed for comfort, reduced sound and plenty of space to reduce stress on the operator.

Operator Comfort

The left and right control levers are ergonomically located for convenient access. A safety lock system is designed to prevent exiting the cabin while hydraulic controls are live. When the safety lever and left side console are positioned upright, hydraulic functions are disengaged.



A tiltable left-side console make the operator easier to enter and exit the cab.



PROFITABILITY

9A series is designed to maximize profitability through improved efficiencies, enhanced service features and longer life components.



*Photo may include optional equipment.



Easy Change Air Cleaner

The R30Z-9AK is equipped with a durable plastic air cleaner designed for easy maintenance.



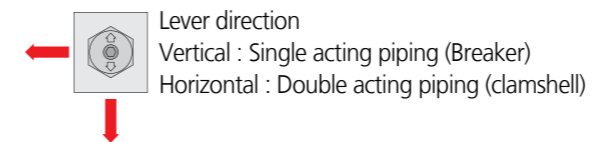
Centralized Grease Fittings

A centralized lubrication bank is available for faster, easier service and maintenance.



Selector Valve for Single or Double Acting Piping

Double Acting Pipe located on front of the Fuel Tank for easy to access and control.



Easy Access

The R30Z-9AK was built with accessibility in mind. All doors, covers and hoods were built for complete open access. Regular service and maintenance is easy and convenient with the R30Z-9AK.



Proportional Auxiliary Hydraulic System

-Opt: Proportional Control Switch for better speed control
 -Enlarge the Operation Convenience



Long-Life Components

9A series excavators were designed with bushings designed for long-life lube intervals (250 hrs) & polymer shims (wear resistant, noise reducing), long-life hydraulic filters (1,000hrs), long-life hydraulic oil (5,000hrs), more efficient cooling systems and integrated preheating systems which extend service intervals, minimize operating costs and reduce machine down time.

Specifications

ENGINE

MODEL	Kubota D1305	
Type	4 Cycle. In line, water cooled diesel	
Rated flywheel horse power		
SAE	J1995 (gross)	24.9 HP (18.5 kW) at 2,400 rpm
	J1349 (net)	24.4 HP (18.2 kW) at 2,400 rpm
DIN	6271/1 (gross)	25.2 PS (18.5 kW) at 2,400 rpm
	6271/1 (net)	23.5 PS (18.2 kW) at 2,400 rpm
Max. torque	8.3 kgf-m(60.17 lbf-ft) at 1,600 rpm	
Bore X stroke	78 mm x 88 mm (3.07" x 3.46")	
Piston displacement	1,261 cc (76.9 in ³)	
Batteries	12V - 80 AH	
Starting motor	12V - 1.4 kW	
Alternator	12V - 40 A	

HYDRAULIC SYSTEM

MAIN PUMP	
Type	variable displacement piston pumps
Rated flow	2 x 27.6 + 19.6 L/min
Sub-pump for pilot circuit	Gear pump

Cross-sensing and fuel saving pump system

HYDRAULIC MOTORS

Travel	Two speed axial piston motor with counter balance valve and parking brake
Swing	Axial piston motor with automatic brake

RELIEF VALVE SETTING

Implement circuits	220 Kg/cm ² (3,130 psi)
Travel circuit	220 Kg/cm ² (3,130 psi)
Swing circuit	175 Kg/cm ² (2,489 psi)
Pilot circuit	30 Kg/cm ² (430 psi)
Service valve	Installed

HYDRAULIC CYLINDERS

No. of cylinder bore X stroke	Boom: 75 X 562 mm (3.0" x 22.2")
	Arm: 70 X 500 mm (2.8" x 19.7")
	Bucket: 60 x 420 mm (2.4" x 16.5")
	Boom swing: 75 X 400 mm (3.0" x 15.7")
Dozer blade: 95 X 140 mm (3.7" x 5.5")	

* Hyundai Bio Hydraulic Oil (HBHO) available

NOISE LEVEL (CAB)

NOISE LEVELS (DYNAMIC VALVE)	
LwA	94 dB
LpA	75 dB

COOLANT & LUBRICANT CAPACITY

(Refilling)	liter	US gal	UK gal
Fuel tank	30	7.9	6.6
Engine coolant	5.0	1.1	0.9
Engine oil	5.9	1.6	1.3
Hydraulic tank	27	7.1	5.9

TRAVEL LEVERS

Traveling and steering : Two levers with pedals.

CONTROL LEVERS

TYPE	
Pilot control	Two joysticks with one safety lever (LH): Swing and arm, (RH): Boom and bucket with horn (ISO)
Engine throttle	Mechanical, cable type

SWING SYSTEM

Swing motor	Axial piston motor
Swing reduction	Planetary gear reduction
Swing bearing lubrication	Grease-bathed
Swing brake	Wet disc
Swing speed	9.1 rpm

DRIVES & BRAKES

Max. travel speed(high) / (low)	4.4 km / 2.4 km (2.8 mph) / (1.5 mph)
Maximum traction force	2.4 ton
Maximum gradeability	30 °
Parking brake	Wet disc

DIGGING FORCE (ISO)

Bucket	2,050 kgf
	20.1 kN 4,520 lbf
Arm [Long Arm]	1,400 [1,265] kgf
	13.7 [12.4] kN
	3,090 [2,790] lbf

WEIGHT(APPROXIMATE)

Operating weight including Cabin, 2,030mm (6' 8") boom, 1,120mm (3' 8") arm, SAE heaped 0.08 m³ (0.1yd³) excavator bucket, lubricant, coolant, full fuel tank, hydraulic tank and operator (75kg)

Shoe Width	Rubber shoe 300 mm (10")	
Operating Weight	Cabin	2,930 Kg (6,460 lb)
	Canopy	2,820 Kg (6,220 lb)
Option Weight	Quick coupler	+46 Kg (101 lb)
	canopy	-110 Kg (243 lb)
	additional counter weight	+130Kg (287 lb)
Ground Pressure	Cabin	0.29 kg / cm ² (4.12 psi)
	Canopy	0.27 kg/cm ² (3.84 psi)

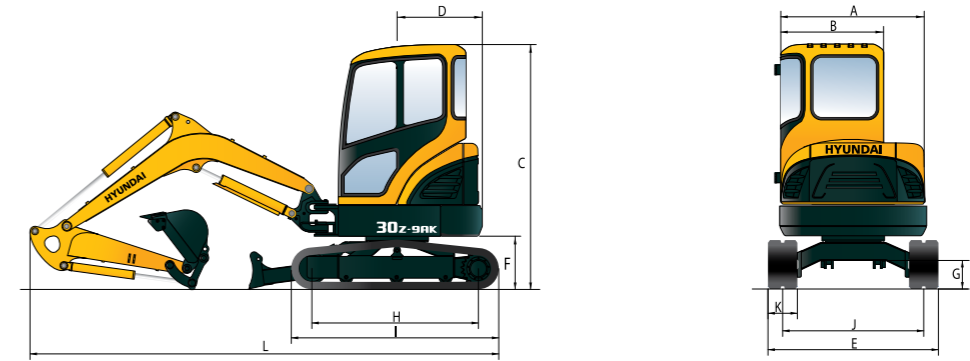
UNDERCARRIAGE

X-leg type center frame is integrally welded with reinforced box-section track frames. The undercarriage includes lubricated rollers, track adjusters with shock absorbing springs and sprockets, and rubber shoes.

Center frame	X - leg type
Track frame	Pentagonal box type
No. of carrier roller on each side	1
No. of track roller on each side	3

Dimensions & Working Range

R30Z-9AK DIMENSIONS

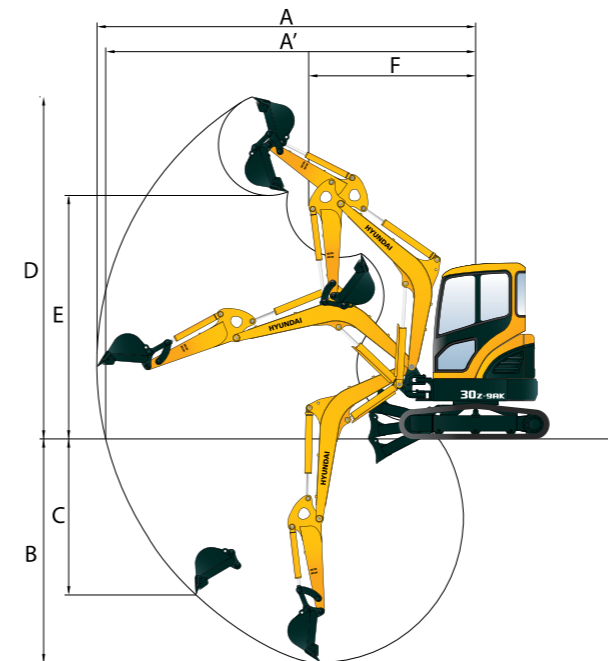


unit: mm (ft-in)

A	Overall width of upper structure	1,485 (4' 10")	G	Ground clearance	290 (11")
B	Overall width of cab	1,050 (3' 5")	H	Tumbler distance	1,550 (4' 11")
C	Overall height of cab	2,500 (8' 2")	I	Track length	1,970 (6' 6")
D	Tail swing radius	775 (2' 7")	J	Track gauge	1,250 (4' 1")
	With additional counterweight	875 (2' 10")	K	Track shoe width	300 (1' 0")
E	Overall width	1,550 (5' 1")	L	Overall length	4,180 (13' 9")
F	Clearance under counterweight	510 (1' 67")		Long Arm	4,220 (13' 10")

R30Z-9AK WORKING RANGE

unit: mm (ft-in)



	Boom length	2,030 (6' 8")
	Arm length	1,120 (3' 8") *1,350 (4' 5")
A	Max. digging reach	4,650 (15' 3") *4,860 (15' 11")
A'	Max. digging reach at ground	4,515 (14' 10") *4,735 (15' 6")
B	Max. digging depth	2,500 (8' 2") *2,720 (8' 11")
C	Max. vertical wall digging depth	2,085 (6' 10") *2,310 (7' 7")
D	Max. digging height	4,235 (13' 11") *4,375 (14' 4")
E	Max. dumping height	2,860 (9' 5") *3,015 (9' 11")
F	Min. swing radius	2,065 (6'9") *2,110 (6'11")

* Long Arm

Specifications

LIFTING CAPACITY R30Z-9AK

Rating over-front Rating over-side or 360 degree

Boom : 2.03 m (6' 5") / Arm : 1.12 m (3' 8") / Bucket : 0.08 m³ SAE heaped / Dozer Down : 250mm (9.8") Rubber track Cabin Type. W/O ADD CWT

Load point height m (ft)		Life-point radius								At max. reach		
		2.0 m (6.6 ft)		2.5 m (8.2 ft)		3.0 m (9.8 ft)		3.5 m (11.5 ft)		Capacity		Reach
												m (ft)
3.5 m (11.5 ft)	kg lb									*720 *1,580	670 1,490	2.64 (8.6)
3.0 m (9.8 ft)	kg lb					*690 *1,520	550 1,220			*620 *1,360	500 1,090	3.20 (10.5)
2.5 m (8.2 ft)	kg lb					*690 *1,520	550 1,210	*700 *1,540	430 940	*580 *1,280	420 920	3.55 (11.7)
2.0 m (6.6 ft)	kg lb			*830 *1,830	720 1,590	*760 *1,680	540 1,190	*730 *1,610	420 940	*570 *1,260	370 830	3.78 (12.4)
1.5 m (4.9 ft)	kg lb			*1,060 *2,350	700 1,540	*880 *1,930	530 1,160	*780 *1,720	420 920	*580 *1,280	350 770	3.91 (12.8)
1.0 m (3.3 ft)	kg lb			*1,300 *2,870	670 1,480	*1,000 *2,210	510 1,130	*840 *1,860	410 900	*610 *1,330	340 750	3.95 (13.0)
0.5 m (1.6 ft)	kg lb			*1,460 *3,220	650 1,440	*1,100 *2,420	500 1,110	*900 *1,970	400 890	*650 *1,440	340 760	3.91 (12.8)
Ground Line	kg lb	*1,550 *3,430	980 2,150	*1,510 *3,330	640 1,420	*1,140 *2,510	490 1,090	*910 *2,010	400 880	*740 *1,620	360 790	3.78 (12.4)
-0.5 m (-1.6 ft)	kg lb	*2,040 *4,490	980 2,150	*1,460 *3,220	640 1,420	*1,100 *2,450	490 1,090	*860 *1,900	400 880	*830 *1,830	390 860	3.56 (11.7)
-1.0 m (-3.3 ft)	kg lb	*1,780 *3,930	980 2,170	*1,310 *2,880	650 1,420	*980 *2,160	500 1,090	*850 *1,870	450 1,000	*850 *1,870	450 1,000	3.21 (10.5)
-1.5 m (-4.9 ft)	kg lb	*1,340 *2,950	1,000 2,200	*960 *2,110	660 1,450					*830 *1,840	600 1,330	2.66 (8.7)

Boom : 2.03 m (6' 5") / Arm : 1.12 m (3' 8") / Bucket : 0.08 m³ SAE heaped / Dozer Up : 250mm (9.8") Rubber track Cabin Type. W/O ADD CWT

Load point height m (ft)		Load radius								At max. reach		
		2.0 m (6.6 ft)		2.5 m (8.2 ft)		3.0 m (9.8 ft)		3.5 m (11.5 ft)		Capacity		Reach
												m (ft)
3.5 m (11.5 ft)	kg lb									*720 *1,580	680 1,490	2.64 (8.6)
3.0 m (9.8 ft)	kg lb					590 1,300	560 1,220			530 1,160	500 1,100	3.20 (10.5)
2.5 m (8.2 ft)	kg lb					590 1,300	550 1,220	450 1,000	430 950	440 980	420 930	3.55 (11.7)
2.0 m (6.6 ft)	kg lb			780 1,720	720 1,600	580 1,280	550 1,200	450 990	430 950	400 880	380 830	3.78 (12.4)
1.5 m (4.9 ft)	kg lb			750 1,660	700 1,540	560 1,240	530 1,170	440 980	420 930	370 820	360 780	3.91 (12.8)
1.0 m (3.3 ft)	kg lb			730 1,600	670 1,490	550 1,210	520 1,140	440 960	410 910	360 800	350 760	3.95 (13.0)
0.5 m (1.6 ft)	kg lb			710 1,560	660 1,450	540 1,190	510 1,120	430 950	410 900	360 800	350 770	3.91 (12.8)
Ground Line	kg lb	1,000 2,210	910 2,010	700 1,540	650 1,430	530 1,170	500 1,100	420 940	400 890	380 840	360 800	3.78 (12.4)
-0.5 m (-1.6 ft)	kg lb	1,000 2,210	910 2,010	690 1,530	650 1,420	530 1,160	500 1,100	420 930	400 890	410 910	390 870	3.56 (11.7)
-1.0 m (-3.3 ft)	kg lb	1,010 2,230	920 2,020	700 1,540	650 1,430	530 1,170	500 1,100	420 1,070	400 1,010	480 1,070	460 1,010	3.21 (10.5)
-1.5 m (-4.9 ft)	kg lb	1,030 2,260	930 2,060	710 1,570	660 1,460					650 1,430	610 1,340	2.66 (8.7)

- Lifting capacity are based on ISO 10567.
- Lifting capacity of the Robex Series does not exceed 75% of the tipping load with the machine on firm, level ground or 87% of full hydraulic capacity.

- The Lift- point is a bucket pivot mounting pin on the arm (without bucket mass).
- (*) indicates the load limited by hydraulic capacity.

Specifications

LIFTING CAPACITY R30Z-9AK

Rating over-front Rating over-side or 360 degree

Boom : 2.03 m (6' 5") / Arm : 1.35 m (4' 5") / Bucket : 0.08 m³ SAE heaped / Dozer Down : 250mm (9.8") rubber track. Cabin Type. W/O ADD CWT

Load point height m (ft)		Load radius										At max. reach				
		2.0 m (6.6 ft)		2.5 m (8.2 ft)		3.0 m (9.8 ft)		3.5 m (11.5 ft)		4.0 m (13.1 ft)		Capacity		Reach		
														m (ft)		
3.5 m (11.5 ft)	kg lb													*550 *1,220	*550 *1,220	2.99 (9.8)
3.0 m (9.8 ft)	kg lb							*580 *1,270	580 1,270					*490 *1,090	460 1,020	3.48 (11.4)
2.5 m (8.2 ft)	kg lb							*590 *1,310	590 1,300	*630 *1,380	460 1,010			*470 *1,030	400 880	3.80 (12.5)
2.0 m (6.6 ft)	kg lb							*670 *1,480	580 1,280	*660 *1,450	460 1,000	*480 *1,050	370 810	*460 *1,020	370 810	4.01 (13.1)
1.5 m (4.9 ft)	kg lb	*1,230 *2,700	1,080 2,370	*930 *2,050	750 1,660	*800 *1,750	570 1,250	*720 *1,590	450 990	*680 *1,510	360 800	*750 *1,640	350 780	*470 *1,030	350 760	4.13 (13.5)
1.0 m (3.3 ft)	kg lb			*1,190 *2,630	720 1,590	*930 *2,050	550 1,210	*800 *1,760	440 970	*720 *1,580	360 790	*720 *1,580	360 790	*490 *1,070	340 740	4.17 (13.7)
0.5 m (1.6 ft)	kg lb	*1,340 *2,960	980 2,160	*1,390 *3,070	700 1,540	*1,050 *2,310	540 1,180	*860 *1,900	430 950	*750 *1,640	350 780	*750 *1,640	350 780	*520 *1,150	340 740	4.13 (13.5)
Ground Line	kg lb	*1,540 *3,400	970 2,130	*1,490 *3,280	690 1,510	*1,120 *2,470	530 1,160	*900 *1,990	420 930	*620 *1,360	350 770	*620 *1,360	350 770	*580 *1,270	350 770	4.01 (13.2)
-0.5 m (-1.6 ft)	kg lb	*2,020 *4,450	960 2,130	*1,490 *3,280	680 1,500	*1,130 *2,480	520 1,150	*900 *1,990	420 930					*670 *1,480	380 830	3.80 (12.5)
-1.0 m (-3.3 ft)	kg lb	*1,930 *4,270	970 2,140	*1,390 *3,060	680 1,500	*1,050 *2,320	520 1,150	*890 *1,970	430 940					*790 *1,750	430 940	3.49 (11.4)
-1.5 m (-4.9 ft)	kg lb	*1,590 *3,500	980 2,160	*1,150 *2,530	690 1,520	*810 *1,790	530 1,170							*810 *1,780	530 1,170	3.01 (9.9)
-2.0 m (-6.6 ft)	kg lb	*900 *1,990	*900 *1,990											*750 *1,650	*750 *1,650	2.21 (7.2)

Boom : 2.03 m (6' 5") / Arm : 1.35 m (4' 5") / Bucket : 0.08 m³ SAE heaped / Dozer Up : 250mm (9.8") rubber track. Cabin Type. W/O ADD CWT

Load point height m (ft)		Load radius										At max. reach				
		2.0 m (6.6 ft)		2.5 m (8.2 ft)		3.0 m (9.8 ft)		3.5 m (11.5 ft)		4.0 m (13.1 ft)		Capacity		Reach		
														m (ft)		
3.5 m (11.5 ft)	kg lb													*550 *1,220	*550 *1,220	2.99 (9.8)
3.0 m (9.8 ft)	kg lb							*580 *1,270	560 1,240					460 1020	440 970	3.48 (11.4)
2.5 m (8.2 ft)	kg lb							*590 *1,300	560 1,230	460 1,010	430 960			400 880	380 830	3.80 (12.5)
2.0 m (6.6 ft)	kg lb							*580 *1,280	550 1,210	450 1,000	430 950	360 800	350 760	360 800	340 760	4.01 (13.1)
1.5 m (4.9 ft)	kg lb	1,110 2,450	1,010 2,220	760 1,680	710 1,560	570 1,250	530 1,180	440 980	420 930	360 790	340 760	340 750	330 720	330 720	340 720	4.13 (13.5)
1.0 m (3.3 ft)	kg lb			730 1,610	680 1,500	550 1,210	520 1,140	440 960	410 910	350 780	340 740	330 730	320 700	320 700	320 700	4.17 (13.7)
0.5 m (1.6 ft)	kg lb	1,010 2,220	910 2,020	710 1,560	660 1,450	540 1,180	500 1,110	430 940	400 890	350 770	330 730	330 730	320 700	320 700	320 700	4.13 (13.5)
Ground Line	kg lb	990 2,190	900 1,990	690 1,530	640 1,420	530 1,160	500 1,090	420 930	400 880	350 760	330 730	340 760	330 730	340 760	330 730	4.01 (13.2)
-0.5 m (-1.6 ft)	kg lb	990 2,180	900 1,980	690 1,510	640 1,410	520 1,150	490 1,080	420 920	400 870					370 820	350 780	3.80 (12.5)
-1.0 m (-3.3 ft)	kg lb	1,000 2,190	900 1,990	690 1,520	640 1,410	520 1,150	490 1,080	420 920	400 880					420 930	400 880	3.49 (11.4)
-1.5 m (-4.9 ft)	kg lb	1,010 2,220	920 2,020	700 1,530	650 1,430	530 1,170	500 1,100							530 1,160	500 1,100	3.01 (9.9)
-2.0 m (-6.6 ft)	kg lb	*900 *1,990	*900 *1,990											*750 *1,650	*750 *1,650	2.21 (7.2)

- Lifting capacity are based on ISO 10567.
- Lifting capacity of the Robex Series does not exceed 75% of the tipping load with the machine on firm, level ground or 87% of full hydraulic capacity.

- The Lift- point is a bucket pivot mounting pin on the arm (without bucket mass).
- (*) indicates the load limited by hydraulic capacity.